



Better • Luxury • Prime



NOTE : This brochure is a conceptual presentation and not a legal offering. The promoter reserve the right to make changes in plans, specifications and elevation as deemed fit.



SriRaksha Constructions

Flat No. 5/1, Block - A, Madhu Park Ridge,
Near Tipukhan Bridge, Bandlaguda Zagir,
Hashim Nagar, RR Dist. Hyderabad - 500091.
✉ mkgunji@gmail.com

99634 49911, 97049 14461

**2 & 3 BHK
Luxury
Gated
Community
Apartments**



RERA No. PO2400001834



UNNATI VISTAS

The Elite Lifestyle

Better • Luxury • Prime

Unnati Vistas brings you all the Luxuries you desire in a dream homes with world-class amenities, and lush greens at prices that makes it even more desirable.



*Pleasant
&
Mesmerizing*

ISOMETRIC VIEW

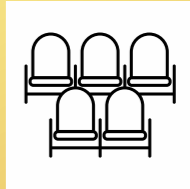


UNNATI VISTAS

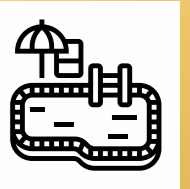
AMENITIES



Gym



Community Hall



Swimming Pool



CC TV



Intercom



Security



Lifts



Guest Rooms



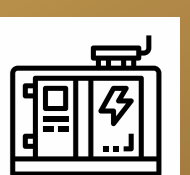
Half Basket Ball Court



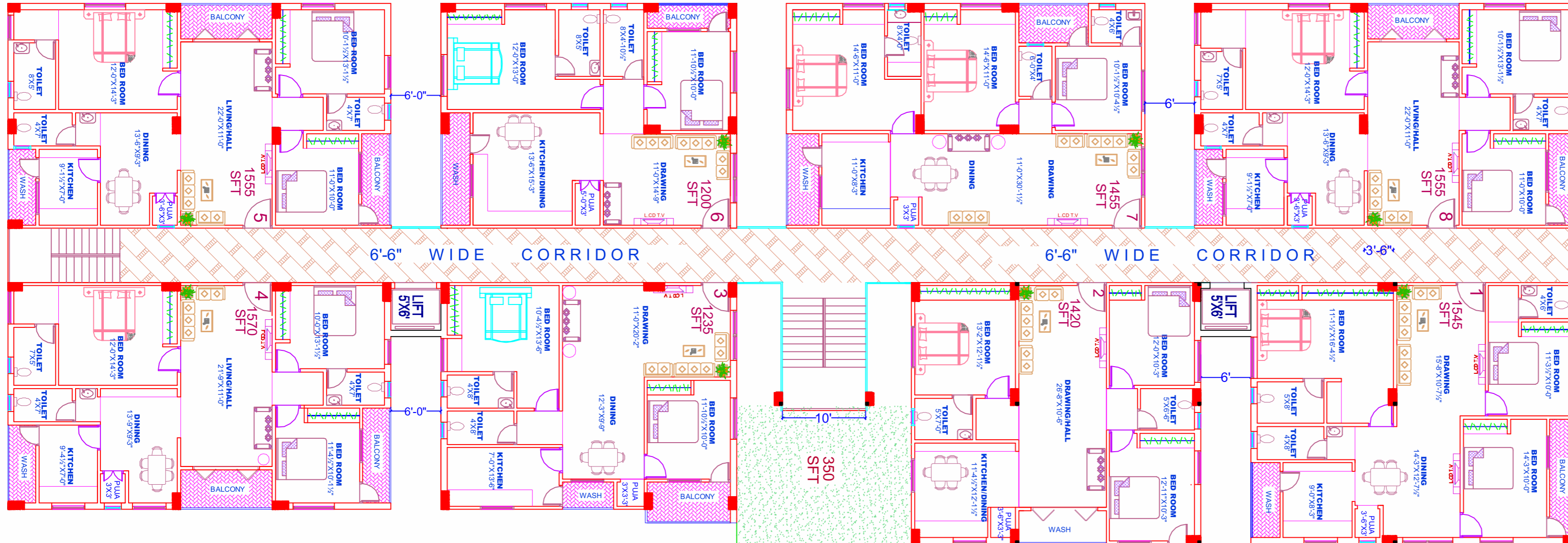
Badminton Court



Children Play Area



Power Backup



FLOOR PLAN

SPECIFICATIONS



STRUCTURE

RCC framed structure.



SUPER STRUCTURE

Light weight Red bricks in cement mortar with two coats of plastering and sponge finish.



MAIN DOOR

Teak wood frame and panel high quality door with beeding and fittings.



INTERNAL DOORS

Teak wood frames with flush doors of standard make.



WINDOWS

UPVC frames and shutters with glass panels, Mesh and M.S. safety grills.



KITCHEN

Granite platform with stainless steel sink and glazed ceramic tile dado upto 2' height above platform.



ELECTRICAL

- Concealed copper wiring of standard make.
- Modular range switches of standard make.
- Power plug for chimney, mixer grinder / microwave oven in kitchen.



WATER SUPPLY

Municipal & Borewell water through separate overhead tanks with individual plumbing lines.



FLOORING

2'X2' Vitrified tiles for entire flat except in toilets & balconies. Acid resistant Anti-skid ceramic tiles for toilets and matching dado in ceramic tiles upto 6'0" height.



PAINTING

All internal walls except (toilets, balconies) to be finished with luppam and two coats of emulsion paint (standard make) over it.



TV

TV points in living & Master Bed Room.



LIFT

6 Passenger lift of standard make.



GENERATOR

Power backup Generator.



SANITARY

Concealed CPVC piping with good quality C.P. fittings.

- Attached toilet: One EWC and flush tank and tap point with health faucet, and one wall mixer.
- Common toilet: One indian WC with flush tank one tap point.
- Dining : one wash basin with tap point.
- Kitchen : Tap points for municipal and bore water separate.
- Kitchen balcony one tap point & washing machine tap.



STILT PLAN



NOTE

- If the prospective owner is interested in additional works like extra electrical point, RCC Storage racks / shelves, lofts or any other miscellaneous works, then before commencement of these extra works he/ She has to take the estimation of the same from the builder and pay the cost of these extra works in advance.
- GST and Registration charges will be applicable as extra.

MURALI KRISHNA GUNJI

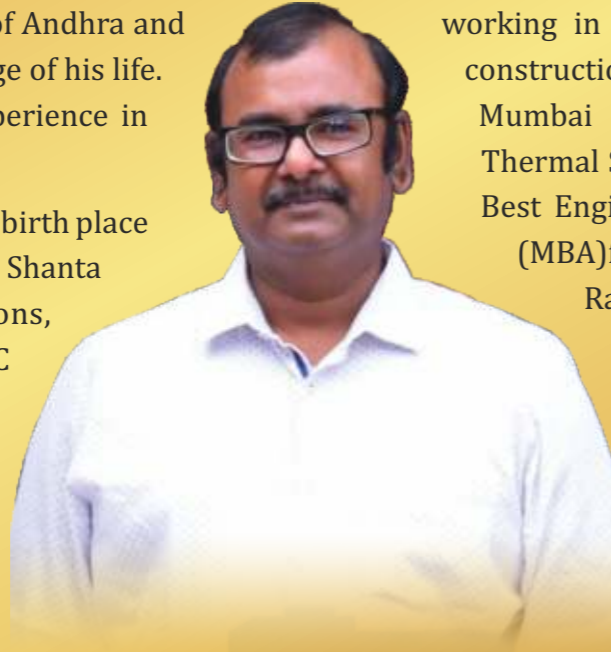
B.TECH MBA MCSD ITIL
MANAGING DIRECTOR

One more tall personality from this great land of Andhra and Telangana who achieved his dreams at each stage of his life. Murali K Gunji has more than 20 years of experience in buildings and construction.

Hailed from the coastal place of Nellore, which is birth place for many great business personalities like GVK, Shanta Biotech, Apollo Group, Aparna Constructions, Bollineni Hospitals, Minerva Hotels, KMC Builders, Ceebros Constructions etc...Murali K Gunji has done his initial education at Nellore.

He has graduated from the nation's prestigious institute, NIT Warangal with Gold Medal in Civil Engineering. While in the College, Govt. of India has appointed Murali as a student member in the team to study the earthquake resistant buildings in the Latur earthquake affected areas.

Started career with Government of India at Ranchi of Jharkhand , Murali was a member of the team that brought the Continuous Casting Technology (CCM) in Steel Manufacturing Sector into India. Rest is history with India's steel production increasing by 300 percent. Murali K Gunji then moved into Tunnel and Rock Engineering sector , worked as incharge engineer for the 6.5 km country's longest Karbude railway tunnel at Konkan Railways. He has received Best Engineer award from the hands of India's Metro man Shri E. Sreedharan while



"DREAM is not what you see in sleep, DREAM is something which doesn't let you sleep."

– Dr. A.P.J Abdul Kalam.

working in Konkan Railways. Murali also involved in the construction of prestigious projects like Alamatti Dam, Mumbai Trans Harbour Sea Link Bridge, Kothagudem Thermal Station, Mangalore Port etc... Murali has received Best Engineer award from Mumbai Builders Association (MBA)for his work in the construction of Belapur Railway station.

Murali Gunji has then moved to Malaysia to get involved in the building of a new administrative capital for Malaysia called Putrajaya. He was incharge for highways and 22 bridges in the core capital region.

To explore more apart from his civil engineering career, Murali K Gunji then moved

to IT and software sector, worked as consultant for Citibank at London and HP company at USA. He also received the award for Best Team Manager from the hands of Azim Premji while working as a Project Manager at Wipro in 2004. In 2007 he joined into world renowned Swiss bank, UBS. Later he worked at many multinational companies in different countries. His last position was Vice President, Bank of America at Hyderabad.

His passion for civil engineering never dies. His ambition to serve the society with best quality homes and apartments at affordable prices made him a builder.

LOCATION

